

# LOFTY LIVING

NEWS & VIEWS FROM KUHNS BROS. LOG HOMES



## Plan of the Month

## MILLWOOD

### PLAN FEATURES:

Total: 3,139 sq. ft. (292 sq. m.)

Main Level: 1,807 sq. ft. (168 sq. m.)

Second Level: 1,332 sq. ft. (124 sq. m.)



Copyright ©2008 Kuhns Bros. Log Homes

### ARTISTIC RENDERING ILLUSTRATIONS:

Log Profile: 6 x 8 D  
Corner Option: Dovetail  
Shingle Color: Rustic Evergreen  
Exterior Stain: Brown Tone Light  
Window Color: Forest Green

LOG HOME  
*Design Center*

THOUSANDS of LOG HOME  
FLOOR PLANS . . .  
. . . JUST A CLICK AWAY

**LOG ON TODAY!**  
[www.loghomedesigncenter.com](http://www.loghomedesigncenter.com)

Copyright ©2008 Kuhns Bros. Log Homes

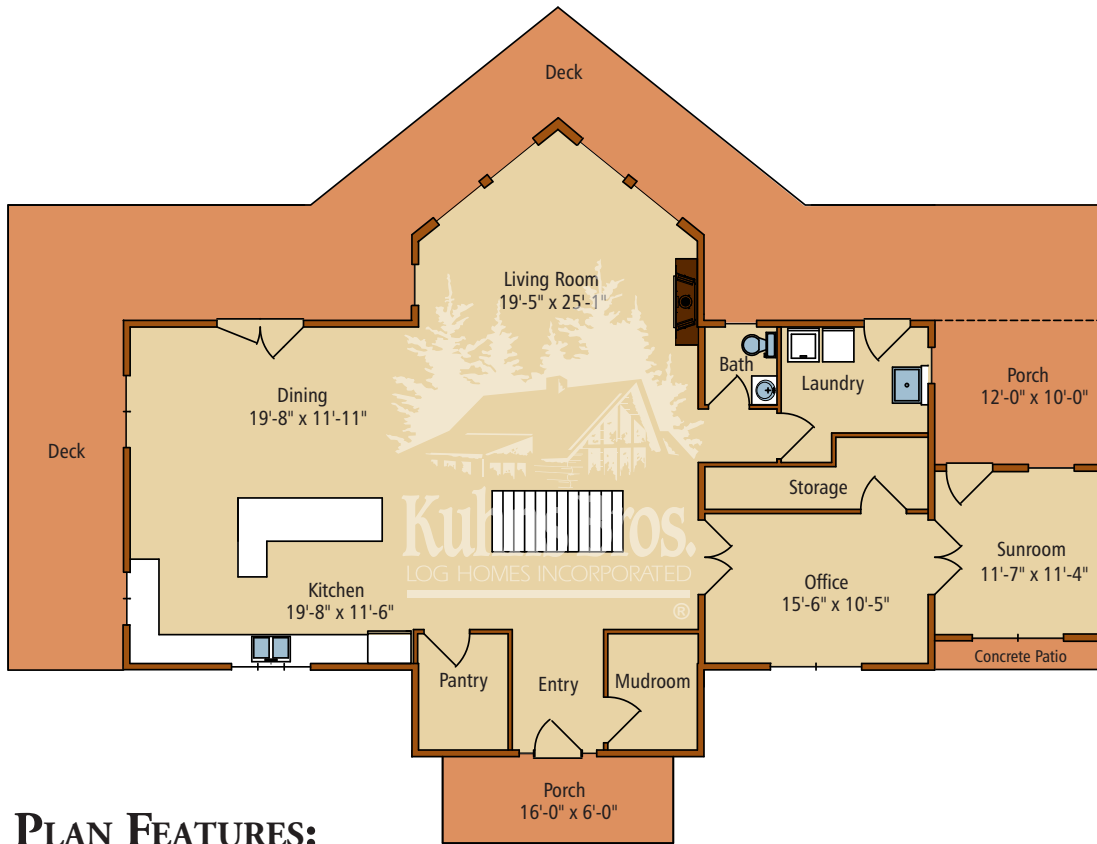
# LOFTY LIVING

NEWS & VIEWS FROM KUHNS BROS. LOG HOMES



## Plan of the Month

## MILLWOOD



### PLAN FEATURES:

**Bedrooms:** 3

**Bathrooms:** 2.5

